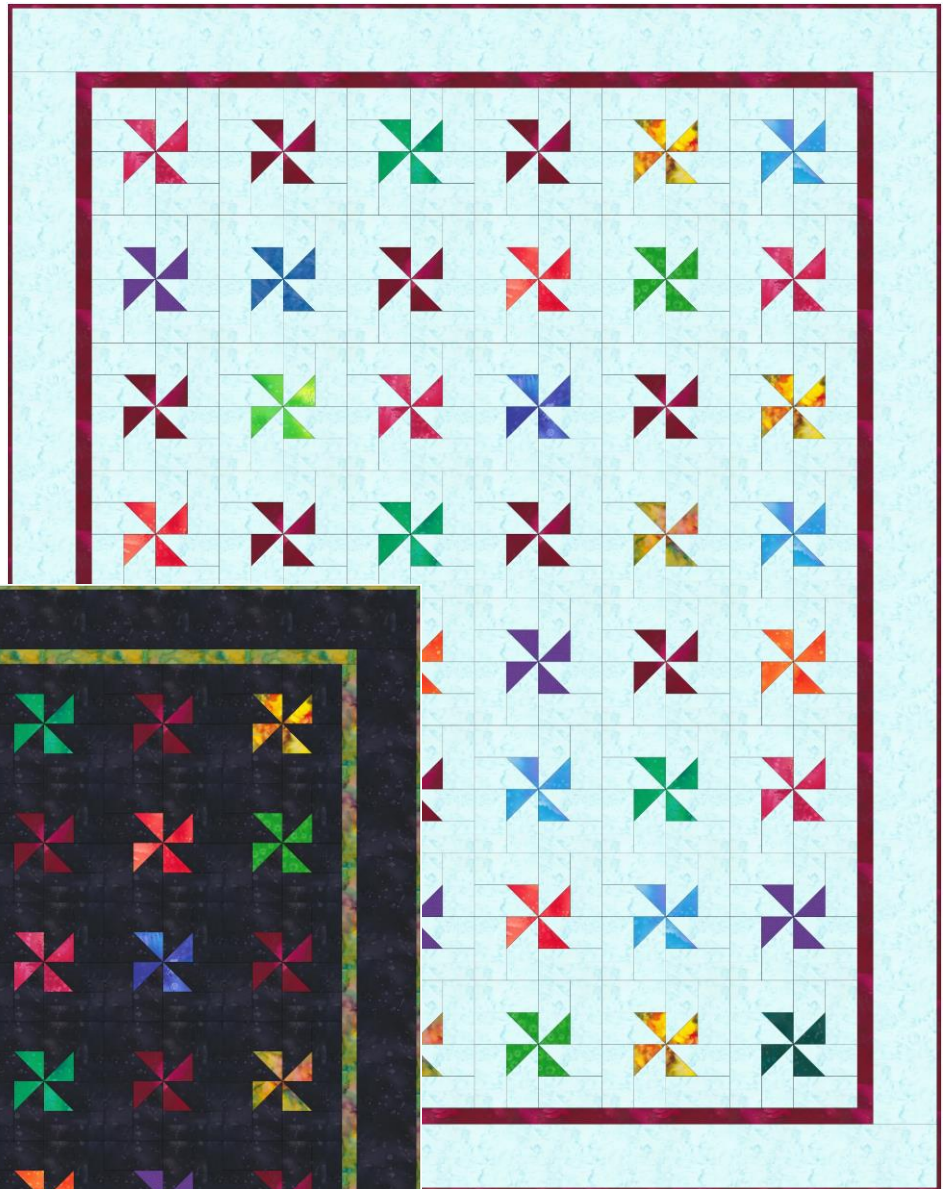


Scrappy Pinwheel Block

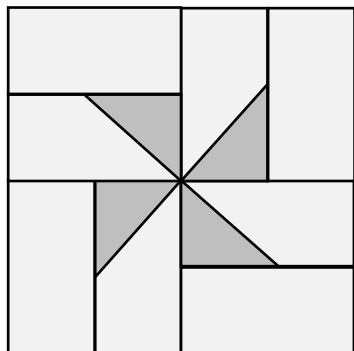
8 1/2" block



[Quilting With Tamara](http://quiltingwithtamara.com)

Scrappy Pinwheel Block

8 1/2" block



Fabric and Cutting Directions for 1 block:

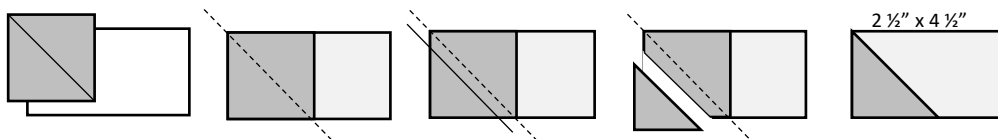
Background
2 1/2" x 4 1/2" rectangles – 8

Scrappy Colors
2 1/2" squares - 4

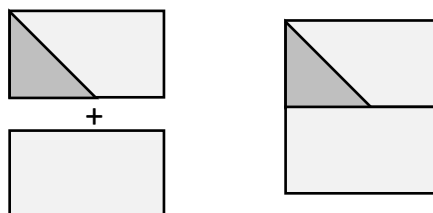
For a 6x8 block layout, you will need 384 Background rectangles (8 pieces x 48 blocks) and 192 Scrappy squares (4 pieces x 48 blocks).

Draw a diagonal line on the wrong side of the Scrappy 2 1/2" squares. (You can also just iron the squares on the diagonal to create the line.) This line is the sewing line. You can eyeball it, but don't be surprised if the corners of the Flying Geese look a little wonky.

Layer the Scrappy Square on the 2 1/2" x 4 1/2" rectangle, right sides together, as shown in the diagram. Pay attention to the direction of the drawn line. Sew on the diagonal line. Trim 1/4" from the sewing line toward the outside corner. Press the seam allowance toward the Scrappy fabric. Create 4 for each Pinwheel block.

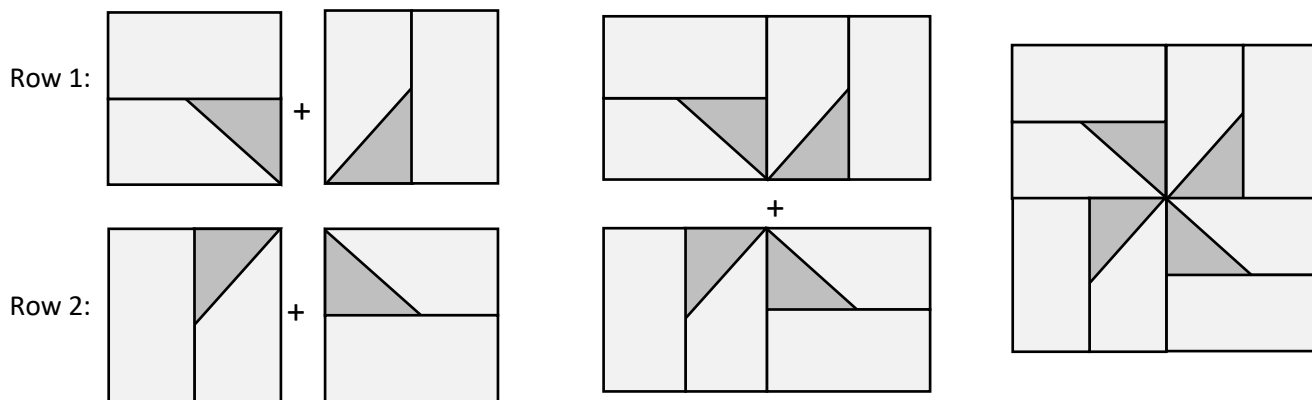


Add the 2 1/2" x 4 1/2" rectangle to the units as shown. If you add it to the wrong side, you will lose the pinwheel pattern



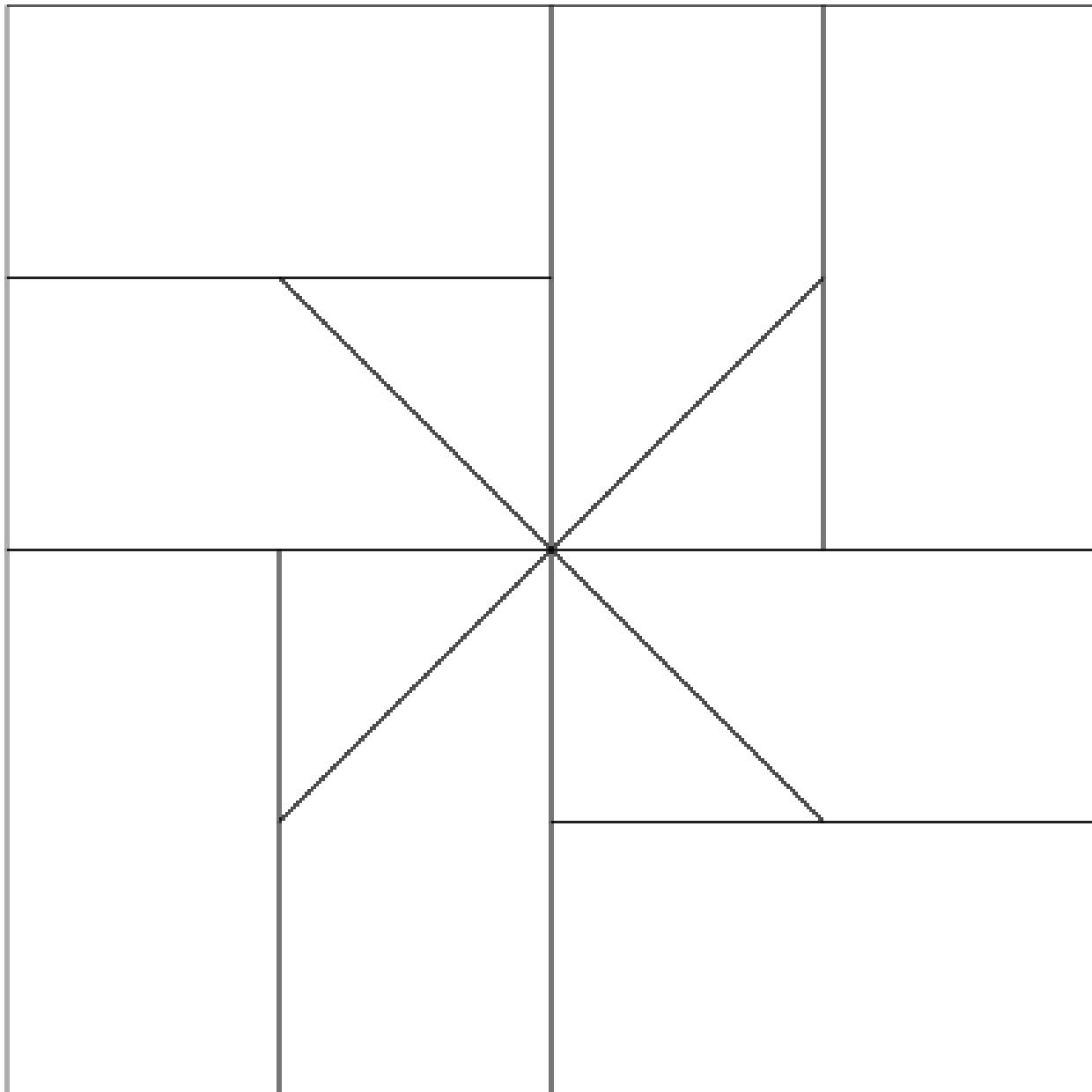
Create 4 per block measuring 4 1/2" square

Sew units into rows, measuring 4 1/2" x 8 1/2". Sew rows together to create a 8 1/2" block.



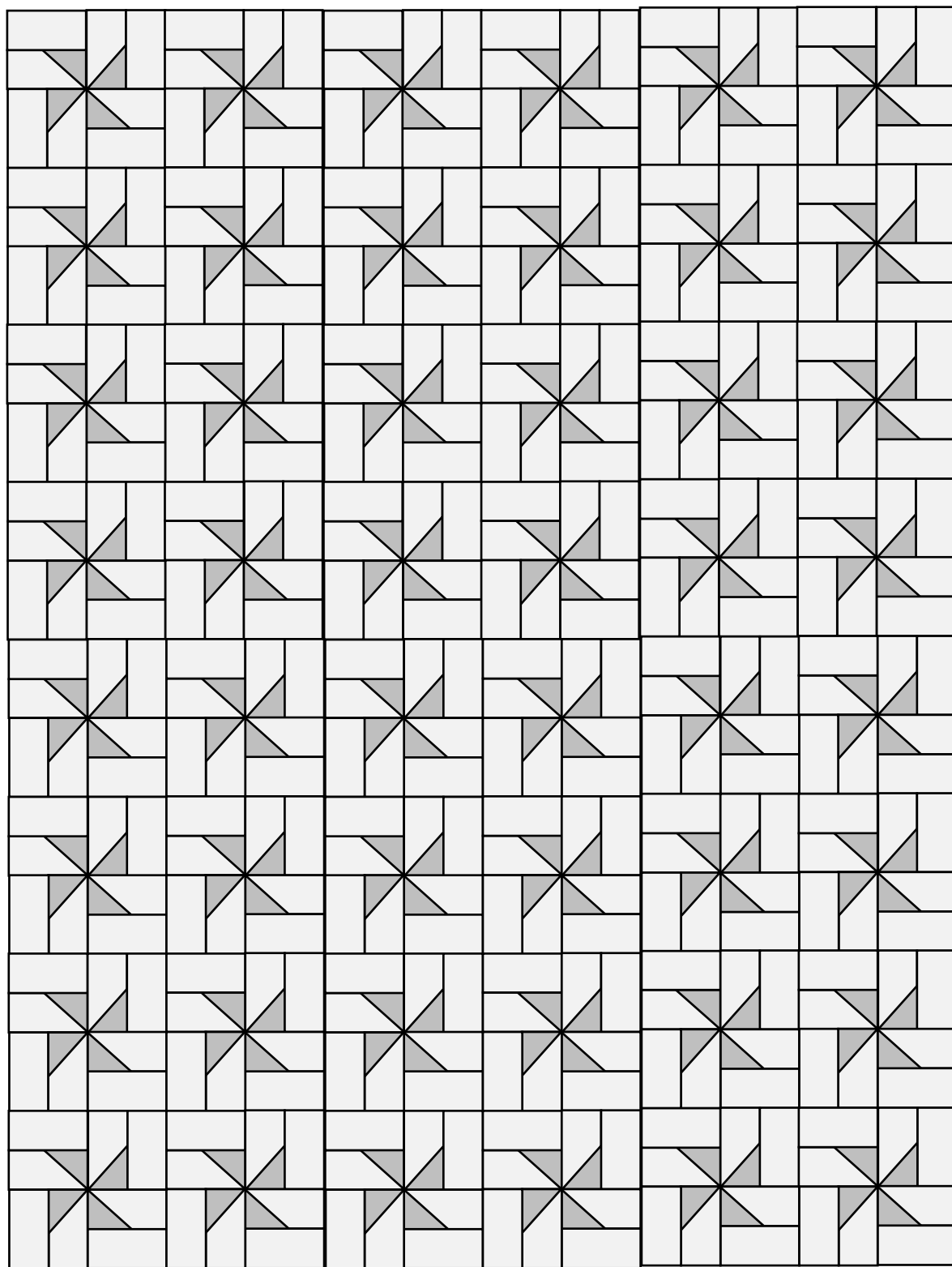
Scrappy Pinwheel Block

Block Diagram



Scrappy Pinwheel Quilt Example

6 x 8 block layout



[Quilting With Tamara](#)